

JouleTemp Demo97 v86

Current Temperature:	-0.1 °C
Setpoint:	-1.0 °C
Differential:	0.4 °C
Range Offset:	0.0 °C
Humidity:	35.2%

Control Status:	Cooling	C
Alarm Status:	Memory	M
Defrost Status:	Off	OFF
Door Monitor:	Open	
Humidity Control:	Not Used	

Last Alarm:	19/11/2008 11:20
High Temp Sensor:	76.4 °C
Last Defrost:	19/11/2008 11:06
Next Defrost:	19/11/2008 13:05
Product Probe:	41.4 °C

Refresh Acknowledge Alarm Defrost Programming

Logs

Show Current Custom

Date / /

Time :

Period

Export to Excel

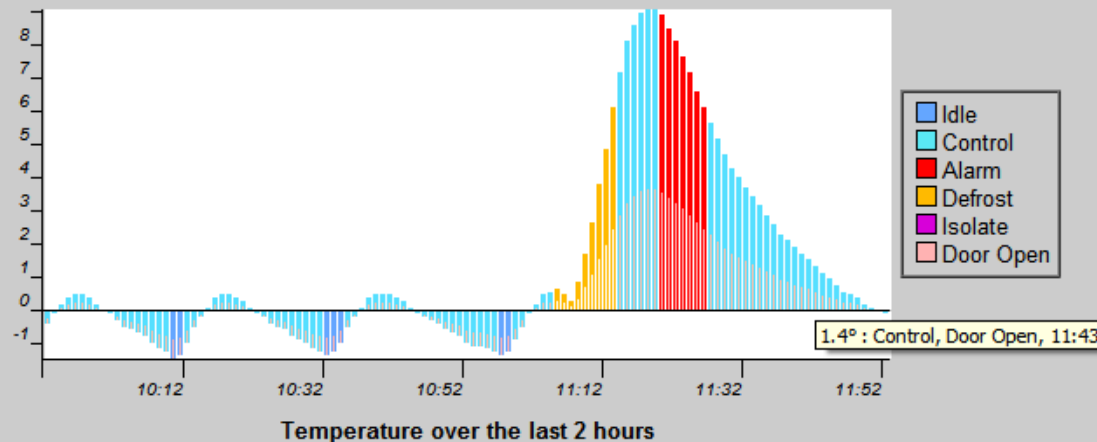
Show Logs

Show Graph

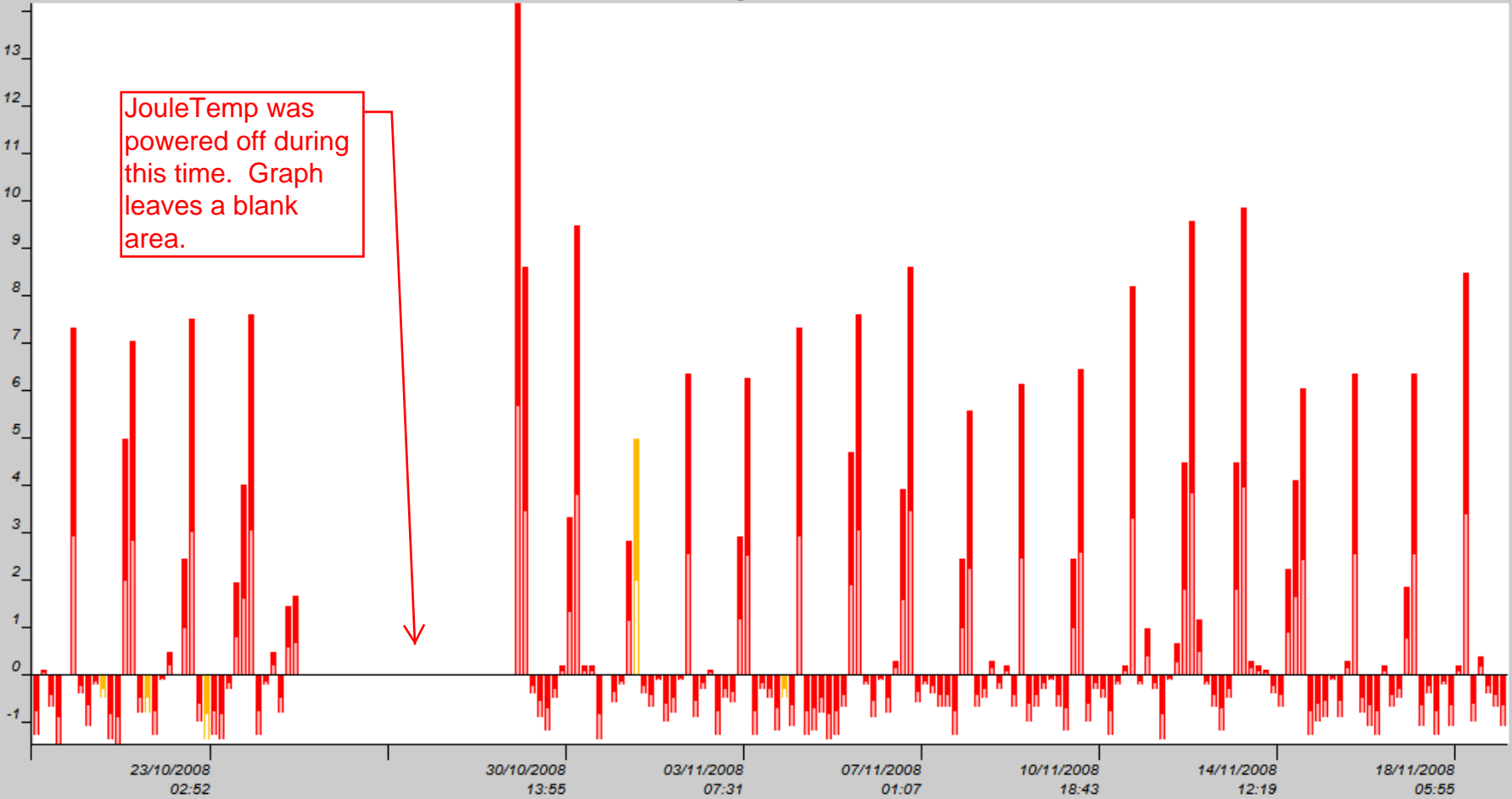
Show a graph on this screen

31 days set here.

use this to generate data file in xls format



JouleTemp Demo97 v86 Temperature



- Idle
- Control
- Alarm
- Defrost
- Isolate
- Door Open

Graph generated at 19/11/2008 11:46 (224 min. per bar)

Date	Time	Event	Temperature	High Temp Sensor	Humidity	Product Probe	Alarm	Control	Defrost	Isolate	Door	Alarm Ack.	Temp. Alarm	Distress Alarm	Door Alarm	Network Alarm	Humidity Alarm
19/11/2008	11:54:00	Periodic	-0.1 °C	76.4 °C	35.30%	41.4 °C	Off	On	Off	Off	Ope	Ok	Ok	Ok	Ok	Ok	Ok
19/11/2008	11:53:00	Periodic	-0.1 °C	76.4 °C	35.20%	41.4 °C	Off	On	Off	Off	Ope	Ok	Ok	Ok	Ok	Ok	Ok
19/11/2008	11:52:00	Periodic	0.0 °C	76.4 °C	35.00%	41.4 °C	Off	On	Off	Off	Ope	Ok	Ok	Ok	Ok	Ok	Ok
19/11/2008	11:51:00	Periodic	0.1 °C	76.4 °C	34.90%	41.3 °C	Off	On	Off	Off	Ope	Ok	Ok	Ok	Ok	Ok	Ok
19/11/2008	11:50:00	Periodic	0.2 °C	76.4 °C	34.70%	41.3 °C	Off	On	Off	Off	Ope	Ok	Ok	Ok	Ok	Ok	Ok
19/11/2008	11:49:00	Periodic	0.4 °C	76.4 °C	34.60%	41.3 °C	Off	On	Off	Off	Ope	Ok	Ok	Ok	Ok	Ok	Ok
19/11/2008	11:48:00	Periodic	0.5 °C	76.4 °C	34.60%	41.2 °C	Off	On	Off	Off	Ope	Ok	Ok	Ok	Ok	Ok	Ok
19/11/2008	11:47:00	Periodic	0.6 °C	76.3 °C	34.50%	41.1 °C	Off	On	Off	Off	Ope	Ok	Ok	Ok	Ok	Ok	Ok
19/10/2008	12:25:00	Periodic	-1.3 °C	74.0 °C	34.70%	41.2 °C	Off	On	Off	Off	Ope	Ok	Ok	Ok	Ok	Ok	Ok
19/10/2008	12:24:00	Periodic	-1.2 °C	74.0 °C	34.80%	41.2 °C	Off	On	Off	Off	Ope	Ok	Ok	Ok	Ok	Ok	Ok
19/10/2008	12:23:00	Periodic	-1.1 °C	74.0 °C	34.70%	41.1 °C	Off	On	Off	Off	Ope	Ok	Ok	Ok	Ok	Ok	Ok
19/10/2008	12:22:00	Periodic	-1.0 °C	74.0 °C	34.70%	41.1 °C	Off	On	Off	Off	Ope	Ok	Ok	Ok	Ok	Ok	Ok
19/10/2008	12:21:00	Periodic	-0.9 °C	74.0 °C	34.80%	41.0 °C	Off	On	Off	Off	Ope	Ok	Ok	Ok	Ok	Ok	Ok
19/10/2008	12:20:00	Periodic	-0.8 °C	74.0 °C	34.60%	41.0 °C	Off	On	Off	Off	Ope	Ok	Ok	Ok	Ok	Ok	Ok
19/10/2008	12:19:00	Periodic	-0.7 °C	74.0 °C	34.60%	41.0 °C	Off	On	Off	Off	Ope	Ok	Ok	Ok	Ok	Ok	Ok
19/10/2008	12:18:00	Periodic	-0.6 °C	74.0 °C	34.70%	41.0 °C	Off	On	Off	Off	Ope	Ok	Ok	Ok	Ok	Ok	Ok
19/10/2008	12:17:01	Periodic	-0.5 °C	74.0 °C	34.70%	41.0 °C	Off	On	Off	Off	Ope	Ok	Ok	Ok	Ok	Ok	Ok
19/10/2008	12:16:00	Periodic	-0.4 °C	74.0 °C	34.60%	41.0 °C	Off	On	Off	Off	Ope	Ok	Ok	Ok	Ok	Ok	Ok
19/10/2008	12:15:00	Periodic	-0.3 °C	74.0 °C	34.50%	41.0 °C	Off	On	Off	Off	Ope	Ok	Ok	Ok	Ok	Ok	Ok
19/10/2008	12:14:00	Periodic	-0.2 °C	74.0 °C	34.60%	40.9 °C	Off	On	Off	Off	Ope	Ok	Ok	Ok	Ok	Ok	Ok
19/10/2008	12:13:00	Periodic	-0.1 °C	74.0 °C	34.60%	40.9 °C	Off	On	Off	Off	Ope	Ok	Ok	Ok	Ok	Ok	Ok
19/10/2008	12:12:01	Periodic	0.1 °C	74.0 °C	34.60%	40.9 °C	Off	On	Off	Off	Ope	Ok	Ok	Ok	Ok	Ok	Ok
19/10/2008	12:11:00	Periodic	0.2 °C	74.0 °C	34.60%	40.8 °C	Off	On	Off	Off	Ope	Ok	Ok	Ok	Ok	Ok	Ok
19/10/2008	12:10:00	Periodic	0.4 °C	74.0 °C	34.60%	40.8 °C	Off	On	Off	Off	Ope	Ok	Ok	Ok	Ok	Ok	Ok
19/10/2008	12:09:00	Periodic	0.5 °C	74.0 °C	34.60%	40.8 °C	Off	On	Off	Off	Ope	Ok	Ok	Ok	Ok	Ok	Ok
19/10/2008	12:08:00	Periodic	0.5 °C	74.0 °C	34.50%	40.8 °C	Off	On	Off	Off	Ope	Ok	Ok	Ok	Ok	Ok	Ok
19/10/2008	12:07:01	Periodic	0.5 °C	74.0 °C	34.60%	40.8 °C	Off	On	Off	Off	Ope	Ok	Ok	Ok	Ok	Ok	Ok
19/10/2008	12:06:00	Periodic	0.4 °C	74.0 °C	34.50%	40.8 °C	Off	On	Off	Off	Ope	Ok	Ok	Ok	Ok	Ok	Ok
19/10/2008	12:05:00	Periodic	0.2 °C	74.0 °C	34.60%	40.9 °C	Off	On	Off	Off	Ope	Ok	Ok	Ok	Ok	Ok	Ok
19/10/2008	12:04:00	Periodic	-0.1 °C	74.0 °C	34.50%	40.8 °C	Off	On	Off	Off	Ope	Ok	Ok	Ok	Ok	Ok	Ok
19/10/2008	12:03:00	Periodic	-0.3 °C	74.0 °C	34.60%	40.9 °C	Off	On	Off	Off	Ope	Ok	Ok	Ok	Ok	Ok	Ok
19/10/2008	12:02:00	Periodic	-0.7 °C	74.0 °C	34.40%	40.9 °C	Off	On	Off	Off	Ope	Ok	Ok	Ok	Ok	Ok	Ok
19/10/2008	12:01:00	Periodic	-1.2 °C	74.0 °C	34.70%	40.9 °C	Off	Off	Off	Off	Ope	Ok	Ok	Ok	Ok	Ok	Ok
19/10/2008	12:00:00	Periodic	-1.4 °C	74.0 °C	34.60%	40.9 °C	Off	Off	Off	Off	Ope	Ok	Ok	Ok	Ok	Ok	Ok
19/10/2008	11:59:00	Periodic	-1.4 °C	74.0 °C	34.20%	40.9 °C	Off	On	Off	Off	Ope	Ok	Ok	Ok	Ok	Ok	Ok
19/10/2008	11:58:00	Periodic	-1.3 °C	74.0 °C	34.00%	40.9 °C	Off	On	Off	Off	Ope	Ok	Ok	Ok	Ok	Ok	Ok
19/10/2008	11:57:00	Periodic	-1.2 °C	74.0 °C	34.00%	40.9 °C	Off	On	Off	Off	Ope	Ok	Ok	Ok	Ok	Ok	Ok
19/10/2008	11:56:00	Periodic	-1.1 °C	74.0 °C	33.90%	41.0 °C	Off	On	Off	Off	Ope	Ok	Ok	Ok	Ok	Ok	Ok
19/10/2008	11:55:00	Periodic	-1.0 °C	74.0 °C	33.80%	41.0 °C	Off	On	Off	Off	Ope	Ok	Ok	Ok	Ok	Ok	Ok
19/10/2008	11:54:00	Periodic	-0.9 °C	74.0 °C	33.70%	41.0 °C	Off	On	Off	Off	Ope	Ok	Ok	Ok	Ok	Ok	Ok

Where there are no records (i.e. powered off), no empty lines are generated.

data has been deleted to fit on a single page.

1 Hour

4 Hours

12 Hours

1 Day

3 Days

7 Days

14 Days

31 Days